

IMPROVE **SAFETY** AND **PRODUCTIVITY** OF YOUR C-ARM IN OT ROOMS



Typical C-Arm Positioning with respect to AREA of INTEREST uses unguided movements of the C-Arm. Hence repeated X Ray Exposures are required to realize if C-Arm is correctly positioned

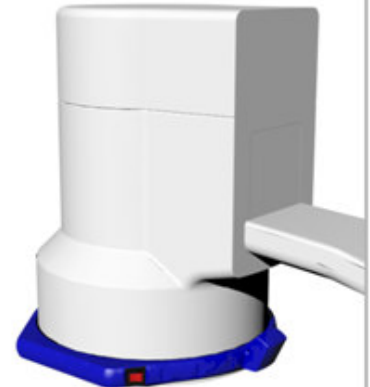
This leads to:

- (i) Un-necessary X Ray exposure to Doctors, Nurses & Patients while positioning
- (ii) Unguided iterative positioning process implies Lost PRODUCTIVITY in OT ROOM

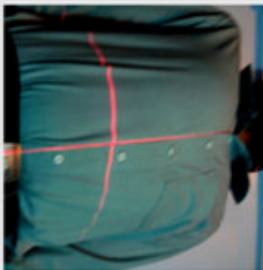
PRESENTING **ISLA-9000** and **ISLA-6000**



**COMPATIBLE
ON C-ARMS
OF ALL
BRANDS**



A LASER based LATCH-ON AIMING TOOL that latches ON to the IMAGER and provides GUIDED POSITIONING of C-ARMS through a sharp CROSS HAIR LASER MARK !



THE PRODUCT HENCE GIVES FOLLOWING ADVANTAGES:

- (i) Provides LASER CROSS MARK on PATIENT BODY corresponding to the CENTER OF IMAGE.
- (ii) Takes away the GUESSWORK out of positioning task since LASER can be used to correctly position the C-Arm without extra X Ray Shots
- (iii) Lesser X Ray Exposure and Improved OT room PRODUCTIVITY !

CONTACT US TO IMPROVE YOUR C-ARM OT-ROOM PRACTICE

Phone: +91 9342529324

e mail : uttejna@in.com



UTTEJNA TECHNOLOGIES
PLOT NO 3,PUTTAPPA INDL ESTATE
MAHADEVAPURA PO
WHITEFIELD ROAD
BANGALORE - 560048

